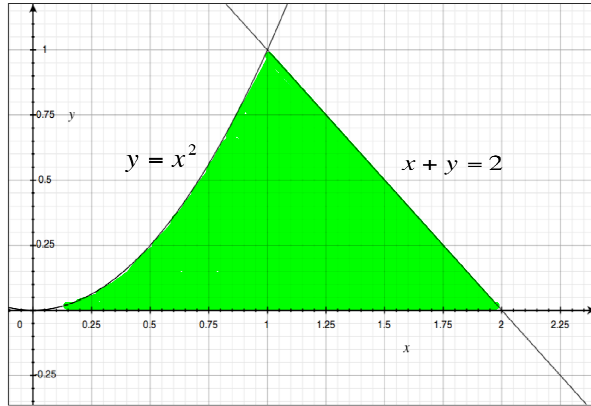


Area in the Plane

Graph

Pg. 400 # 10



Analysis

1. What are the boundaries of the “triangular-shaped” shaded area?

2. In order to find the area, do you need to split into sub-regions? Why or why not?

Symbolic

1. Write an expression for the area of the strips you will be adding up. (If the width is dx , the length must be in terms of x . If the width is dy , the length must be in terms of y).
2. Find the limits of integration. (If using dx , the limits are x values; if using dy , the limits are y values).
3. Integrate to find area.